

CLARION

5.5E

**New Features
in Release E**

COPYRIGHT 2000, 2001 by SoftVelocity Incorporated
All rights reserved.

This publication is protected by copyright and all rights are reserved by SoftVelocity Incorporated. It may not, in whole or part, be copied, photocopied, reproduced, translated, or reduced to any electronic medium or machine-readable form without prior consent, in writing, from SoftVelocity Incorporated.

This publication supports Clarion 5.5. It is possible that it may contain technical or typographical errors. SoftVelocity Incorporated provides this publication “as is,” without warranty of any kind, either expressed or implied.

SoftVelocity Incorporated
2769 East Atlantic Blvd.
Pompano Beach, Florida 33062
(954) 785-4555
www.softvelocity.com

Trademark Acknowledgements:

SoftVelocity® is a registered trademark of SoftVelocity Incorporated.

Clarion 5.5™ is a trademark of SoftVelocity Incorporated.

Btrieve® is a registered trademark of Pervasive Software.

Microsoft® Windows® and Visual Basic® are registered trademarks of Microsoft Corporation.

Wise Installation System is a registered trademark of GLBS, Inc.

All other products and company names are trademarks of their respective owners.

Contents

NEW FEATURES - CLARION 5.5 E	4
Overview	4
List Box Formatter - Cell and Column Tool Tips	4
Enhanced Mouse Wheel Support	9
Dictionary Editor - User Options Enhancement	10
Project System Language Enhancement - EXE Version Stamp	10
Language Enhancement - Additional Function Support for EVALUATE ()....	10

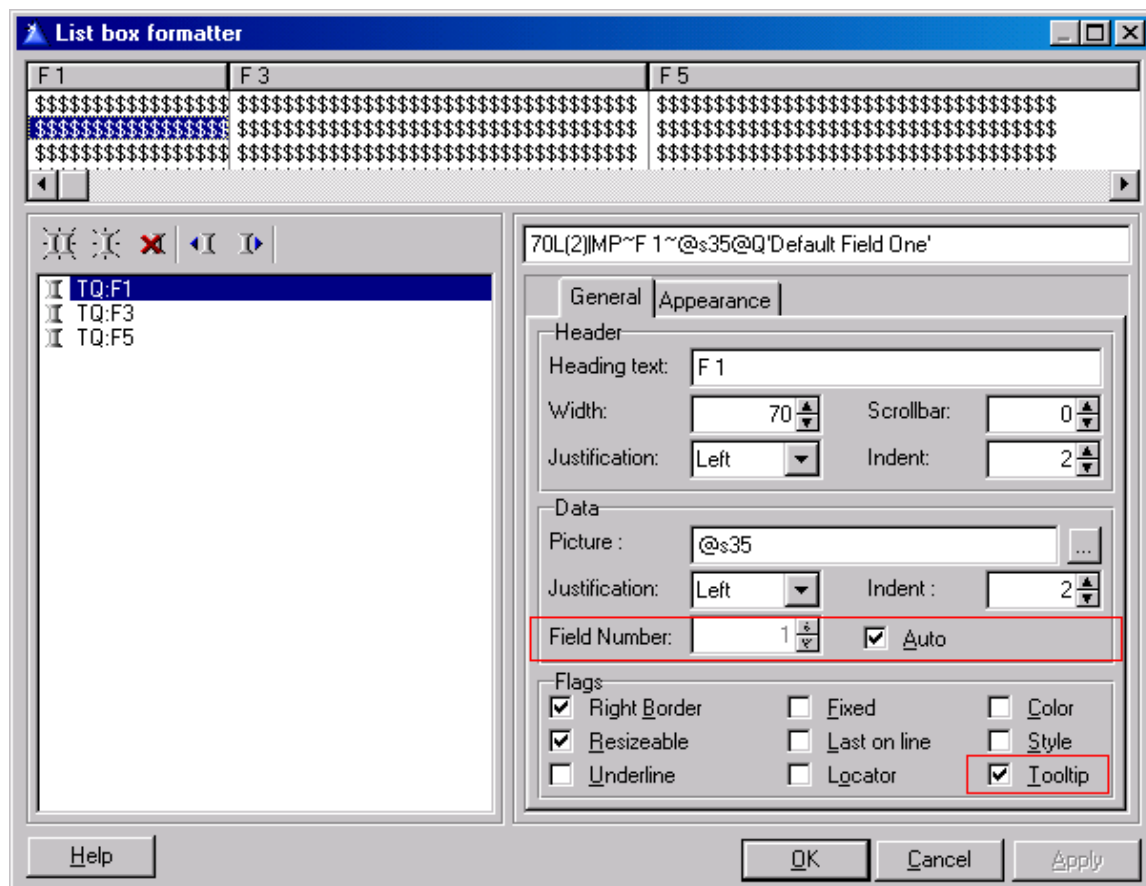
NEW FEATURES - CLARION 5.5 E

Overview

This document highlights new enhancements and features of Clarion 5.5 Version E. It is designed to be an addendum to existing documentation. For ease of use, this document is organized by general topics, referencing any language and environment changes when needed.

List Box Formatter - Cell and Column Tool Tips

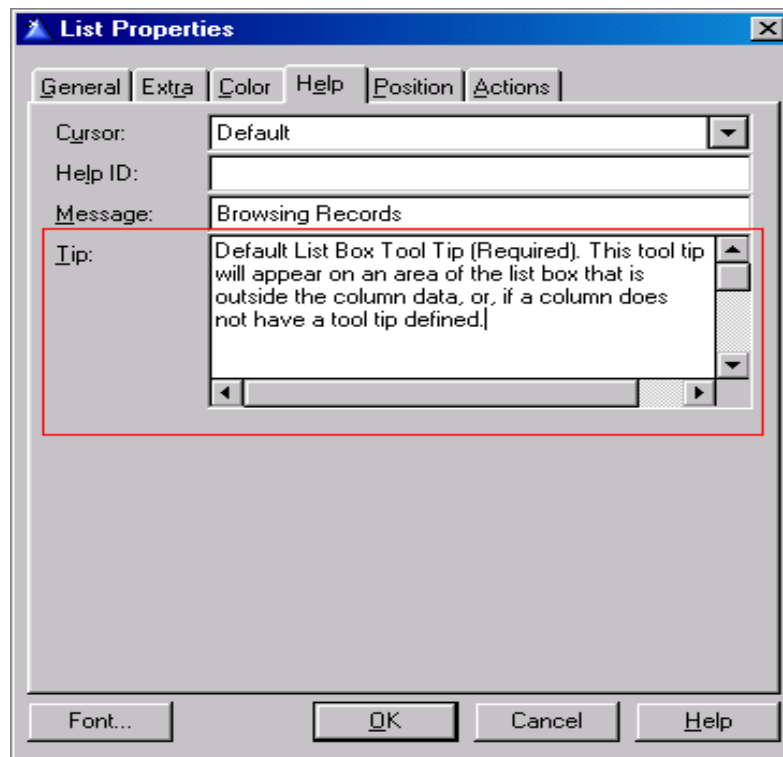
The list box Formatter now includes support for column field numbers and individual column (or cell) tool tips.



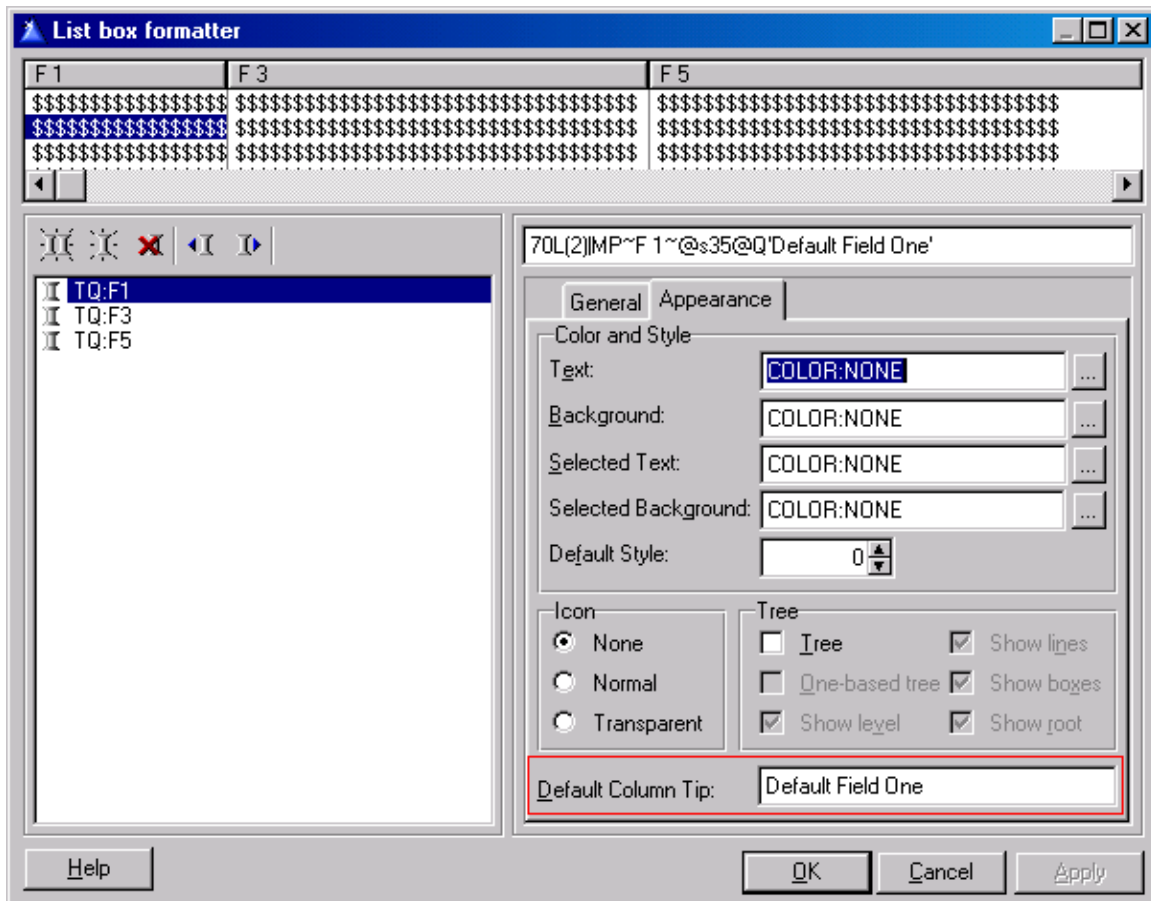
The General tab now includes support for the Field Number of a column, and the ability to override it. The Auto check box designates that the field numbering of the selected column will be based on the order that it appears in the list box. Turning the Auto attribute off allows the field numbering to be specified manually.

A new check box, **Tooltip**, is also shown on the General tab to activate a specific tooltip for the selected column.

NOTE: Before you can activate individual column tooltips, make sure that you have a tooltip defined for the listbox control. This is done by entering default text in the Tip Attribute, found on the selected list box control properties Help tab.



A default column tip value, shown on the List box Formatter's **Appearance** tab, is used to designate default text to be used for the selected column's tool tip.

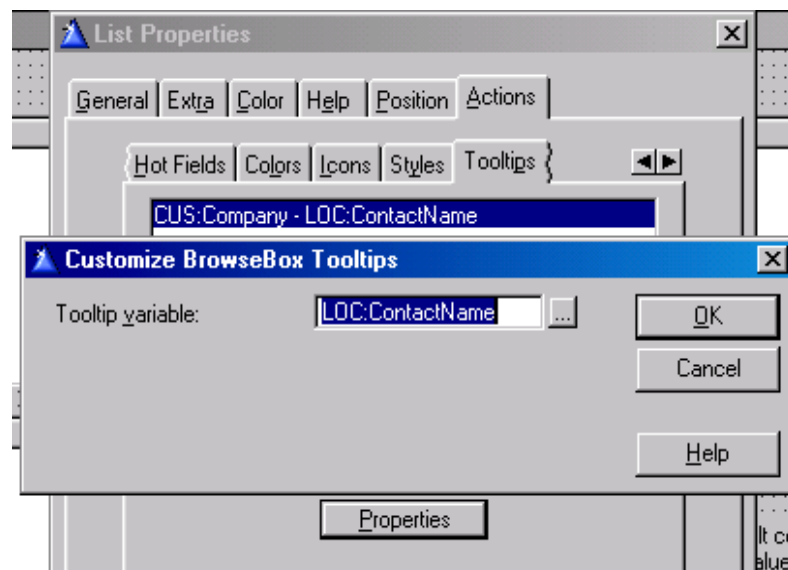


Column Tool Tip Template Support

A column tool tip's contents can now be associated with a variable. Support for this feature, found on the Actions tab of the selected list box of a BrowseBox control, is built in to the ABC and Clarion template chains. Column tool tip support for the Drop List and the Drop Combo control templates are found in the ABC template chain only.

Examples of this usage:

1. A column tooltip's contents may be extracted from a column defined in a database. (Example - A description column that provides more information for an abbreviated column code.)
2. A local variable that concatenates 2 or more database columns for a descriptive tooltip display (Example - Display a contact first and last name in a tooltip when the company cell is selected)



In the Tooltips tab control (shown above), a list box displays the column data elements that have the ToolTip checkbox active. To associate a variable to the selected tool tip column:

1. **Press the Properties button to display the Customize BrowseBox tooltips dialog.**
2. **Press the ellipsis (...) button to select a variable that will contain the text of your column's tool tip.**

NOTE: A downloadable application example that demonstrates the new Column/Cell tooltip features can be obtained from the SoftVelocity web site Downloads page.

Column ToolTip Language Support - List Box Format String

P

A **P** modifier (PROPLIST:Tip) adds a tool tip to the group. The column's tip text by default is derived from the next queue field that follows the queue field used to hold the actual column's data. If the designated queue field is empty, the Q modifier (see below) designates a string value to use as a default tool tip. Also valid with a VLB (Virtual List Box). Not valid in a REPORT.

Q (string)

A **Q** followed by a string (PROPLIST:DefaultTip) designates the default column tip text to be displayed if the value of the designated P modifier is an empty string. Not valid in a REPORT.

Tip: It is not necessary to be concerned with the precise syntax of the List Box Format String. Always use the List Box Formatter to build the string for you. If you are using PROP:FORMAT in your embedded source, you can always cut and paste your format string from the Formatter as needed.

Associated New Template Symbols

As a result of the new IDE support for List Box Column Tool Tips, the following template symbols have been added.

%ControlHasTip

Similar to symbols like %ControlHasIcon but for per-cell (list box column) tooltip (P modifier)

%ControlFieldHasTip

Similar to symbols like %ControlFieldHasIcon but for per-cell (list box column) tooltip (P modifier)

%ControlFieldDefaultTip

A string value that contains value of the column default tip if it is given, or an empty string otherwise.

Enhanced Mouse Wheel Support

Clarion 5.5E introduces support for the Mouse Wheel - in selected parts of the Development Environment and in your distributed applications.

By default, a single wheel click will scroll approximately 3 lines or rows.

Runtime Library Support (32-bit only)

32-bit applications that you distribute now have built-in Mouse Wheel support for windows, image controls, spin boxes, and list box controls.

If a window control with current focus is not scrollable, moving your mouse wheel (with the pointer positioned over a valid scrollable control) will transfer focus to that control.

Language Support (32-bit only)

PROP:WheelScroll

A read/write property valid for list and combo box controls. Used to adjust the control sensitivity to mouse wheel scrolling. If property is set to a value less than 1, the property defaults to 1. The lower the value of the property results in more lines scrolled per wheel "click". Default value is 40 (approximately 3 rows per wheel "click" for standard mouse driver settings).

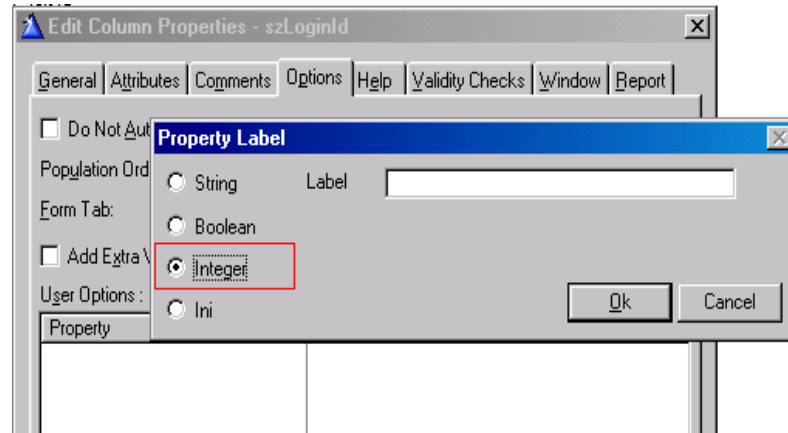
Development Environment (IDE) Support

Support for the mouse wheel is now included in the 32-bit Debugger.

Source, Disassembler, Procedure List, Global Data, Stack Trace, Watch, Memory and Display windows have mouse wheel support. Scrolling frequency is approximately 3 rows per wheel "click". The **Ctrl+Wheel Rotate** combination results in page up/page down behavior.

Dictionary Editor - User Options Enhancement

User Options for Tables, Columns, Keys and Relations in the Dictionary Editor now include a new integer data type. This is useful for any user defined option that must be numeric:



Dictionary values of the String type User Option has now been extended to a maximum length of 1024 characters.

Project System Language Enhancement - EXE Image Version

New statement for Module Definition (.EXP) Files (32-bit only):

IMAGE_VERSION n[m]

Values of **n** and **m** set the image major and minor version fields in the portable executable optional header respectively. **n** and **m** must be decimal numbers. Default values for these fields are zero (0).

Language Enhancement - Additional Function Support for EVALUATE ()

PATH(), **SHORTPATH()** and **LONGPATH()** can now be used in expressions evaluated by the EVALUATE statements in runtime application and in the templates.